



**CONNECT
FOCUS
ADVANCE**



Middlesex
University
London

**POSTGRADUATE
STUDY**

CONTENTS

Why MDX?	2
Your Career	4
Location	8
Campus	10
Support	12
Funding	14
Courses	16
International	20

[Apply Now](#)

[Get in touch](#)

[Book PG Open Event](#)



WHY MIDDLESEX?



95% of our postgraduates are in work or further study
(Graduate Outcomes, 2022)*



Top 7 university for business leaders and entrepreneurs in the UK
Hitachi Capital Finance 2020



Top 2 university in the UK
Times Higher Young University to 2020

From lifetime career support to incredible industry links, we have everything you need to accelerate your success. Here are just a few of the reasons why our postgraduate students decided to study with us:

Excellent industry links

Grow your network and create new connections. We have over 1000 links with local and multinational organisations including PwC, Google and Deloitte. Who would you like us to introduce you to?

We provide support finding invaluable industry placements with our postgraduates going on to have successful careers with organisations including:



Lifetime career support

Get ready to take your next step with courses accredited by professional bodies such as the Chartered Institute of Marketing and Social Work England. And, whether you want interview tips or help polishing your CV, MDXworks are here for you, for life. Our award-winning career team will give you the support you need in a way that suits you.

Top teaching and facilities

We've recently spent over £200m on our world-class facilities. Learn from leading academics and sharpen your skills in state-of-the-art facilities. Master practical skills that are vital for standing out in the workplace and being an expert at what you do. From our recording and media studios to spaces for simulation-based training, everything you need for success is right here on our campus.

* 95% of our full-time postgraduate taught students are in work or further study within 15 months of finishing their degrees (of those available for work or study, latest Graduate Outcomes Survey 2019-20).

Global community

Our campus is home to 167 nationalities with 44,319 students across our campuses in London, Dubai and Mauritius. As part of the global Team MDX, students learn and connect with people from all over the world every day. In our teaching spaces, they get to know people from different cultures and hear different perspectives on what they're studying. In our social places, they make contacts to help with their business or creative project. They grow and learn together so when they leave us they're better prepared for their future in a global workforce.

Fantastic location

Opportunities are everywhere in London – and you'll be in the right place to make the most of all the city has to offer. Hendon has everything you need is within a 10-minute walk and with local transport connections is easy to get anywhere else in the city. Multinational companies like Unilever and BBC have their HQs on our doorstep, and you'll have plenty of opportunities to network with industry experts in your sector.



Meet Angela, MA in Youth Justice, Community and Applied Criminology

Angela achieved her postgraduate degree with us. Now she's working at the Ministry of Justice and studying part-time to complete her PhD

I chose to do my MA at MDX because it involved hands-on experience within the youth justice system. I knew it would be good for my career to have a qualification and work experience. Now I'm doing my research PhD in law alongside my job.

FOCUS ON BUILDING YOUR CAREER



Own your goals and we'll help you achieve them faster

Middlesex students aren't limited to one career path or industry. They're constantly looking for new challenges and ways to make their impact in business and society. Sound like you?

We'll help you adapt and get to the places you want and need to be. This starts with offering accredited courses and helping you find work placements that give you the experience you need to stand out.

Accredited courses

Adding an accredited degree to your CV shows your knowledge is up to date and meets employers' needs. Our postgraduate courses are accredited by a range of leading bodies including:



95% MDX postgraduates go onto work or further study*



Finding a placement or internship is important for me. The guidance from my career advisor about how to write my CV and covering letters has been really helpful. I now feel confident when submitting my application to potential employers.

RUSHALI MSC SPORTS AND EXERCISE NUTRITION

Where our PG students go on placement

We make the most of our business links to offer work placement opportunities with top employers and get you closer to your dream career. Employers that we have worked with include:



* 95% of our full-time postgraduate taught students are in work or further study within 15 months of finishing their degrees (of those available for work or study, latest Graduate Outcomes Survey 2019-20).

CAREER SUPPORT

How can we help?

Get career support in a way that suits you, from the moment you start studying until after you graduate. You can talk to our award-winning team in a way that suits you, online or in-person and on campus.

Advice

- 1:1 advice and drop-in sessions
- CV reviews
- Help applying for further study
- Faculty employability advisers
- Online resources at mdxworks.com

Skills and business support

- Skills for employment workshops
- Mock interviews
- Support setting up, starting, or growing a business

Networking events and opportunities

- Employer engagement and networking opportunities
- Campus-wide and faculty-specific events
- Paid, part-time opportunities through Unitemps
- Work experience and placement support

[Find out more >](#)



I recently got a new job within the civil service thanks to support from the MDX career service. My coach Wendy was phenomenal and helped me with application questions and interview prep. She was there for me through disappointments and celebrated my wins with me.



How can we help?

Our MDXcelerator Student Start Up Support programme offers mentoring and grants for students and alumni who want to be their own boss.

In 2021, this competition attracted 70 initial applicants. We chose 30 talented budding entrepreneurs to benefit from a one-to-one sessions and master classes, as well as networking opportunities and pitching challenges.

The five finalists were awarded a total of £15,000 in funding. Winner Luigi Castellano won the top prize for his accessories and home furnishing business Xuonii, which reinvents everyday products in a more practical and environmentally friendly way.

[READ MORE >](#)

Support for alumni

You'll still be part of our community once you finish the course – and that means we'll be here whenever you need career support. Using our alumni portal, you can read campus news and keep in touch with other graduates, update your details and access worldwide academic journals.

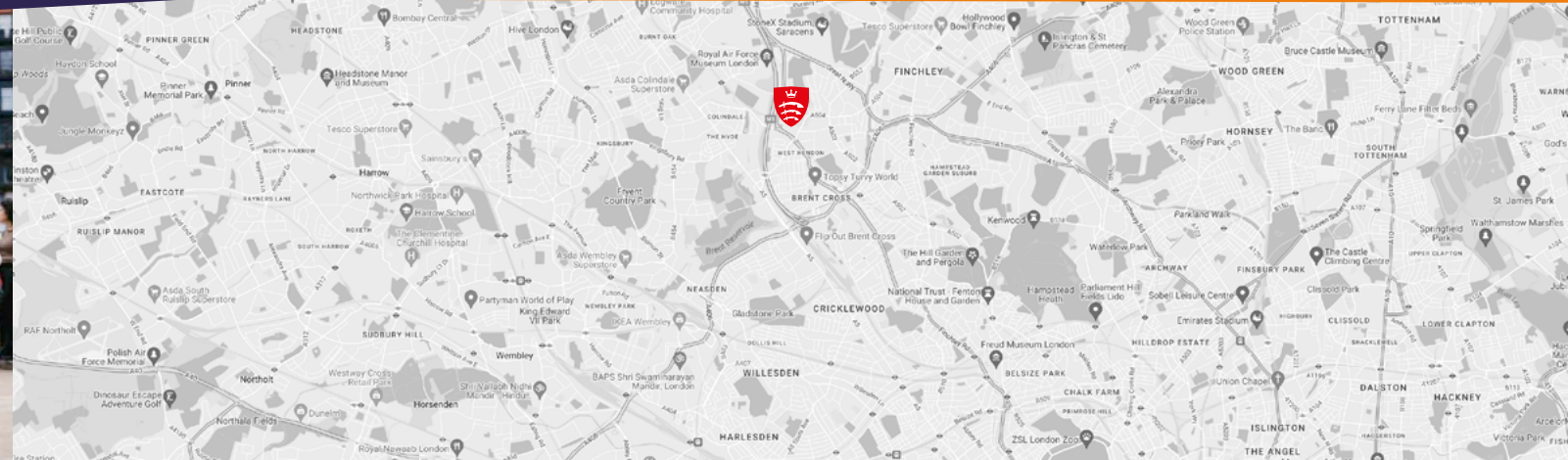
We have official alumni groups on social media too. Some of these are for specific industries and courses, while others help you stay connected with our wider network.

Where you'll meet MDX alumni

We have more than 198,000 alumni across 184 countries. Members of our community are sharing their expertise and making a difference in their field in the UK and beyond.



CREATE CONNECTIONS ACROSS LONDON



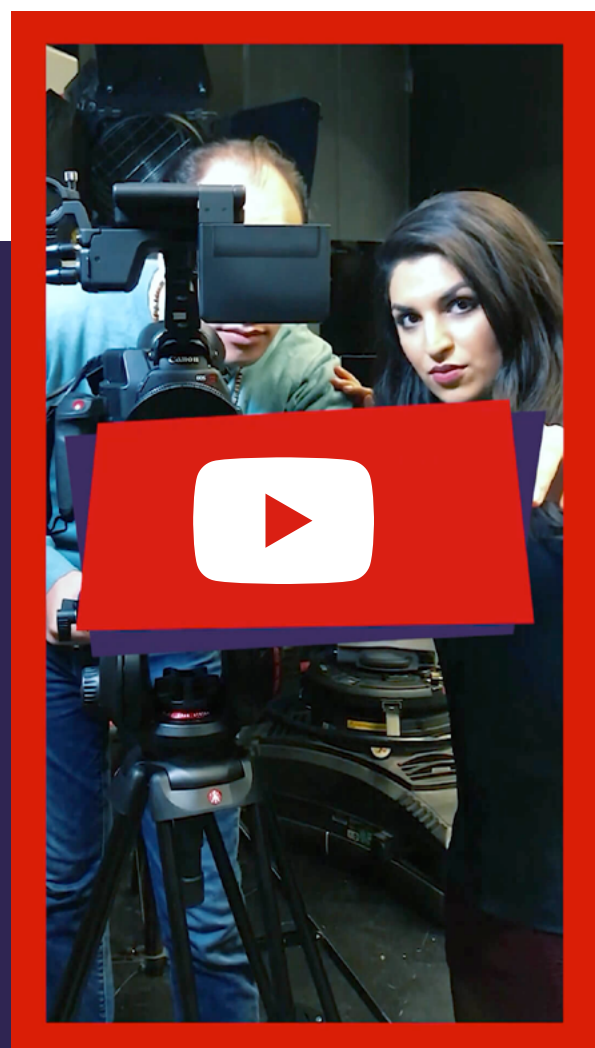
Being in London is the best decision you can make for expanding your network

You know being in London makes sense for your career. It's where multinational companies like Unilever and BBC have their headquarters. It's where you'll have endless opportunities to network with industry leaders.

It's where you'll hear about the latest developments in your field and get to see them for yourself on placement.

Everything you need is here. Why would you study anywhere else?

In north London, Middlesex is always close to the action. Here our postgrads feel and become true Londoners. They embrace the mindset, aim for the top and never give up on their goals.



Meet Leila

I really wanted to develop my career further, so I decided to move to London. It was exactly where I needed to be for the film industry. And I chose Middlesex because of all its facilities.

LEILA
CREATIVE AND PERFORMING ARTS MA ALUMNA



Getting here is easy

Nearest tube: Hendon Central on the Northern Line, Underground Zone 3

Nearest train station: Hendon

Bus: 125, 143, 183 and 326 serve the local area

Discounts: Postgraduate students qualify for a Transport for London discount.

Explore Central London

24 minutes	
33 minutes	
46 minutes	

Life in North London

You'll find our campus in Hendon. It's home to a diverse community with many local family-run businesses to support. Everything you need is within a 10-minute walk and with local transport connections is easy to get anywhere else in the city.

Get outdoors and go for a walk along Brent reservoir – there are plenty of footpaths, trails, and woodland areas to explore. Allianz Park, home of the Saracens rugby club, is right on our doorstep too.

[DIRECTIONS TO MDX >](#)

EXPERIENCE OUR CAMPUS AND COMMUNITY



Explore our facilities

Specialist labs, spacious studios, industry-standard kit for each subject area. Everything you need to prepare your career is right here on campus. We'll help you master practical skills that are vital for standing out in the workplace and being an expert at what you do.



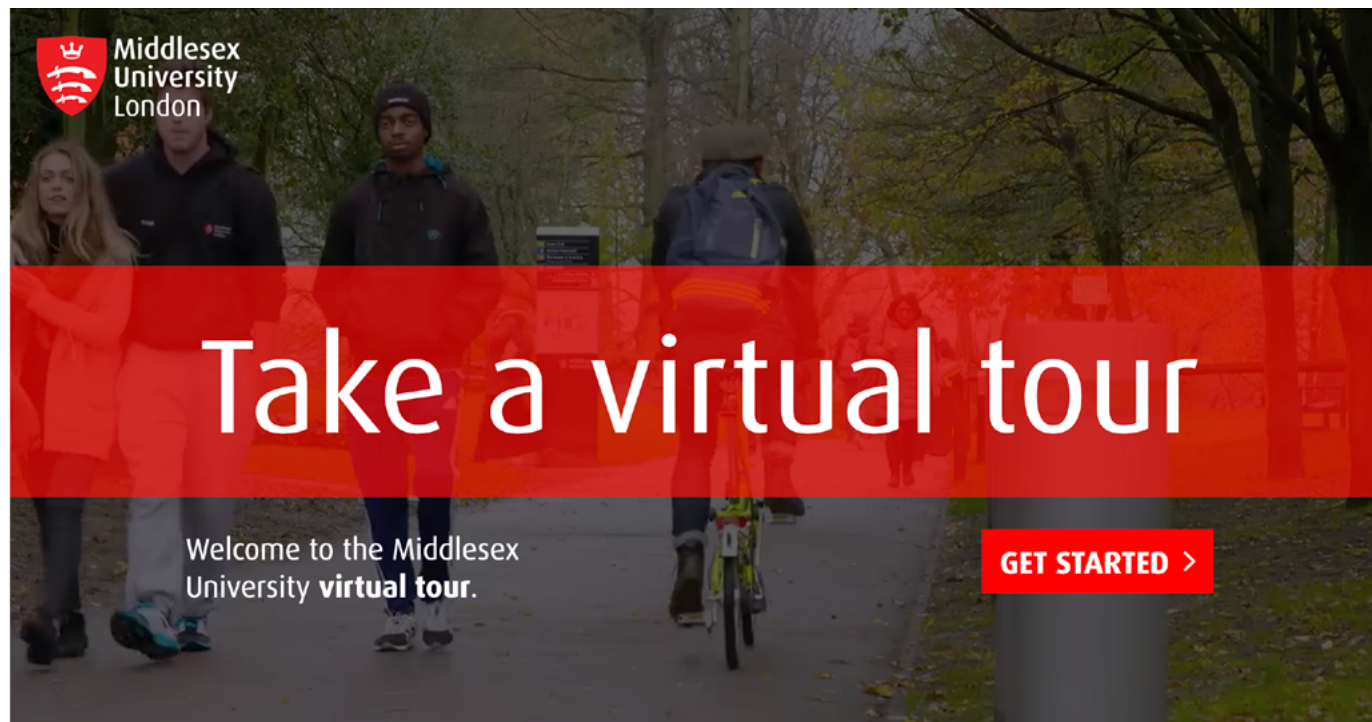
Our modern campus is a hub for research and home to industry-standard facilities

Our green and modern campus matches the buzz and excitement of the city. We've designed unique spaces for carrying out research, working on assignments and catching up over a coffee. It's a fantastic place to be as a postgraduate – as soon as you step on to campus you'll see why.

We've got everything you need to study effectively online too. We'll help you create your home learning environment with the right software, and specialist resources.

Take a virtual tour

Explore our campuses and find out more about our wide range of excellent facilities.



We have four faculties that offer a range of courses designed to advance your expertise

Whichever course you pick, you'll have the facilities you want and the connections you need to advance your career. Here are just a few of the things that make our faculties fantastic.

Faculty of Arts and Creative Industries

Let your imagination run wild in our £80 million purpose-built Grove building. Here you'll find our £300,000 recording studio, studio theatres and a Sony designed TV production suite. Disney, MTV and the BBC are just a few of the places our graduates secure roles.

Our alumni also work with artists such as Beyoncé, Pharrell Williams and Ed Sheeran.

Faculty of Science and Technology

Discover redLoop, our design and innovation centre. Apply your skills in our LSI Sports Injury clinic. Take part in simulation-based training at StoneX Stadium (our £24m centre of excellence is opening in autumn 2022). You'll find our graduates working at Airbus, Dyson, FIFA and Lego, as well as McLaren Automotive, Nike, Public Health England, and Transport for London.

Faculty of Business and Law

Hitachi Capital Invoice Finance ranked MDX 7th out of 121 Universities for 'Student Entrepreneurs'. The study revealed one in seven students from our alumni manage or own their own business. And there's more. Our Accounting and Finance department won the CIMA Global Silver Award for Employability in 2021. We also work with ten professional body partners, including CIPD, ICAEW and CMI.

Joining us to study law? Not only are our academics among the best in their field, but they're making a real-world impact across commercial, international, and human rights law. We also run our LLM General programme across our global campuses in London, Dubai and Mauritius.

Faculty of Health, Social Care and Education

Eager to sharpen your practical skills? Learn with industry-leading virtual reality and simulation kit. Make the most of our connections with charitable, private, and public sector organisations, as well as schools. Our students get hands-on experience at NHS trusts, learning disability homes, care homes and places that specialise in areas such as eating disorders and forensics. You'll quickly see why this faculty has a history of pioneering excellence and is recognised worldwide.

FOCUS ON YOU WITH OUR STUDENT SUPPORT



When you face some challenges, you might need an expert

That's where our specialist services come in. We offer everything from financial advice to mental health support. Your wellbeing is our priority, and we want to help you overcome any challenges you face.

Wellbeing support

We know you'll have plenty going on in your life outside your studies and that sometimes you might need support with your mental health and wellbeing.

Our Counselling and Mental Health Service are here to offer counselling and support.

In this time of uncertainty, we want to not only help and reassure you, but make sure you're ready for any challenge life throws at you. We'll also help you deal with any financial, practical, or legal difficulties, for example through our Student Hardship Fund.



Meet Rebecca

The wellbeing services supported me when I was at my lowest and helped me get to know myself better and to access dialectic behavioural therapy through a local charity Body and Soul.

REBECCA TORRIE
MA FINE ART

[READ REBECCA'S STORY >](#)

Academic support

When you need support, let us know and we'll find the service that's right for you. Whether that's connecting you with an academic, setting up sessions with a student learning assistant, helping you with your English language skills, or something else.

How can we help you?

Academic support

- Academic support
- Online support for writing and numeracy
- Online skills sessions for your course
- Group workshops and one-to-one appointments
- Support from Student Learning Assistants

Disability support

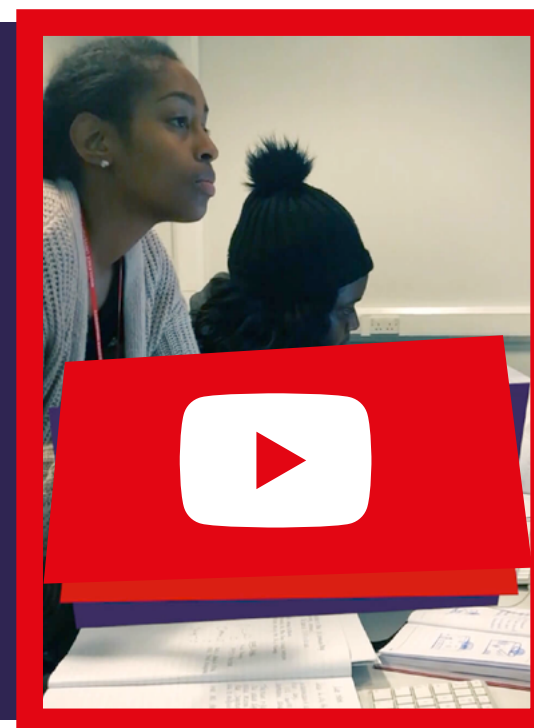
Have a condition that affects how you can study? Just let us know. Our team can help put support in place for you before you start or when you're a student here.

Childcare

We know juggling childcare and education can feel like a balancing act. Our nursery is here to make managing everything easier, offering early years education and day-care for children aged six weeks to five years.

Your child's well-being and development is our top priority. We're governed and inspected by Ofsted, so you can focus on your studies knowing your little one is in safe hands.

[SECURE A NURSERY PLACE >](#)



Meet Naomi

Middlesex offer a part-time option and for me that works really well. Particularly with a busy life working and having two small children. It's also made it easier thanks to the support on offer.

Our Student Union

Middlesex Students' Union (MDXSU) are here to help you make the most of your time at university. As the voice of Middlesex students, the team represent you and campaign for changes you want to see on campus and beyond.

The team are currently campaigning across a range of areas, from support for international students to mental health awareness.

[Meet your Union >](#)

[Discover our support services >](#)

FUNDING YOUR POSTGRADUATE STUDIES



Thinking about how you'll finance your studies?

There are different ways to fund your time at Middlesex:

Apply for a postgraduate loan

You could be entitled to a loan from Student Finance of up to £11,570. This applies to full time, part time and distance-learning courses.

See if you're eligible for reduced fees

We're able to offer reduced fees for some students including the children of Gurkhas. Contact us for more information.

Look at scholarships and bursaries

We award these for different reasons based on your personal circumstances. Unlike a loan, you won't need to pay this money back.

Help from your employer

Your employer might be able to contribute to your fees as part of their staff development programme.

You can also apply for our Student Hardship Fund which you don't have to pay back.

[FIND OUT MORE >](#)

Financial support from MDX

We believe nothing should get in the way of your success. If money is stopping you from studying, we might be able to help.

The Alumni Bursary

If you studied with us as an undergraduate, you could receive up to 20% off your fees. Unsure if you're eligible? Talk to us.

Commonwealth scholarship

You can apply for this scholarship if you're from a Commonwealth country. It covers fees, airfare and a living allowance.

Chevening scholarship

Funded by the Foreign and Commonwealth Office and partner organisations, this scholarship is awarded to students with leadership potential and a strong academic background.

EU bursary

This discount will be applied automatically if you're a European student and meet our other criteria.



[Explore Bursaries and Scholarships >](#)

Get advice on funding

Need support? We're here to help. Email us at SWAT@mdx.ac.uk for expert advice on anything related to funding your postgraduate studies.

You might also find it helpful to refer to the [Student Finance website](#). Here you'll find handy factsheets, videos, guides and more.

ADVANCE YOUR EXPERTISE WITH OUR COURSES



Course directory

At Middlesex University, you can choose from over 150 postgraduate degrees. We offer flexible courses to suit your own interests, lifestyle, and career ambitions.

Art and Design

Children’s Book Illustration and Graphic Novels MA
Fashion Communication Futures MA
Fine Art (Printmaking) MA
Fine Art MA
Graphic Design MA
Interiors (Arch & Design) MA
Photography MA

Business

Applied Behavioural Economics in action MSc/PGDip/PGCert
Banking and Finance MSc
Business (Online Distance Learning) PGCert
Corporate and Marketing Communications MSc/PGDip/PGCert
Digital Marketing MSc/PGDip/PGCert
Financial Management MSc/PGCert/PGDip
Global Supply Chain Management and Development MSc/PG Dip/PG Cert
Human Resource Management and Development MA/PGDip/PGCert (CIPD Accredited)
Innovation Management and Entrepreneurship MSc/PG Dip/PG Cert
International Business Management (Enhanced) MA
International Business Management MA/PGDip/PGCert

International Hospitality and Events Management MSc/PGDip/PGCert
Investment and Finance MSc
Management MSc/PGDip/PGCert
Marine Operations Management MSc
Master of Business Administration (Global Online MBA)
Master of Business Administration MBA
Professional Practice in Maritime Operations PGCert
Shipping and Logistics MBA
Strategic Marketing MSc/PGDip/PGCert
Transdisciplinary Practice MSc

Computer Science Engineering and Maths

Applied Statistics MSc/PGDip
Building Information Modelling Management and Integrated Digital Delivery MSc/PGDip/PGCert
Business Information Systems Management MSc
Creative Technology MA/MSc
Cyber Security and Pen Testing MSc
Cybercrime and Digital Investigation MSc
Data Science MSc
Digital Forensics MSc
Engineering Management MSc
Financial Mathematics MSc/PGDip
Intelligent Telecommunications Engineering
Mechatronic Systems Engineering MSc

Network Management and Cloud Computing MSc
Robotics MSc/PGDip/PGCert
Telecommunications Engineering MSc

Creative Writing and Media

Digital Journalism (DL) MSc
Media Management MA
Novel Writing (DE) MA
Scriptwriting MA

Education and Teaching

Childhood and Education in Diverse Societies (online distance learning) MA
Early Years Initial Teacher Training Assessment Only Route
Early Years Initial Teacher Training: Graduate Employment Based Route
Early Years Initial Teacher Training: Graduate Entry Route
Education MA
Higher Education MA
Higher Education PGCert
PGCE Drama with English (QTS) / English and Drama (QTS)
PGCE English (QTS)
PGCE Geography with Humanities (QTS)
PGCE History with Humanities (QTS)
PGCE Mathematics (QTS)
PGCE Primary Education (QTS)
PGCE Science with Biology (QTS)
PGCE Science with Chemistry (QTS)
PGCE Science with Physics (QTS)
Postgraduate Teacher Apprenticeship (QTS) Primary or Secondary
Qualified Teacher Status – Assessment Only (Primary and Secondary)
Teaching PGCert

Health and Social Work

Advanced Clinical Practice MSc/PGDip
Advanced Professional Practice (Negotiated Specialism) MA/MSc/PGCert
Advanced Social Work Practice (Practice Education) PGCert

Advanced Social Work Practice MA/PGDip/PGCert
Mental Health and Substance Use (Dual Diagnosis) MSc
Mental Health Studies (Top-up) MSc
Mental Health Studies MSc/PGDip / Healthcare Studies PGCert
Midwifery Studies MSc
Nursing (Mental Health) (Pre-registration programme) PGDip
Social Work (Top-up) MA
Social Work MA
Social Work PGDip

Natural Sciences and Science

Biodiversity, Evolution and Conservation in Action MSc/PGDip
Biomedical Science (Cellular Pathology) MSc/PGDip/PGCert
Biomedical Science (Clinical Biochemistry) MSc/PGDip/PGCert
Biomedical Science (Haematology and Transfusion Science) MSc/PGDip/PGCert
Biomedical Science (Infection and Immunity) MSc
Biomedical Science (Medical Immunology) MSc/PGDip/PGCert
Biomedical Science (Medical Microbiology) MSc/PGDip/PGCert
Cancer Biomarkers and Therapeutics MSc/PGDip/PGCert
Cardiac Rhythm Management and Electrophysiology MSc/PGDip/PGCert
Cardiac Ultrasound MSc/PGDip/PGCert
Cardiology MSc/PGDip
Environmental Health MSc
Occupational Health and Safety and Environmental Management MSc/PGDip
Occupational Health, Safety and Wellbeing Management MSc/PGDip
Pharmaceutical Chemistry BSc
Professional Risk and Safety Management (Degree Apprenticeship) MSc
Public Health MSc/PGDip
Sustainability and Environmental Management MSc

ADVANCE YOUR EXPERTISE WITH OUR COURSES (CONTINUED)

Law

Commercial Law LLM/PGDip/PGCert
Human Rights Law LLM/PGDip/PGCert
International Business Law LLM/PGDip/PGCert
International Law LLM/PGDip/PGCert
International Minority Rights Law LLM/PGDip/PGCert
Law (General) LLM/PGDip/PGCert

Performing Arts

Arts Management MA
Classical Music Business MA
Professional Practice, Artistic Practitioner MA
Professional Practice, Arts and Creative Industries (specialisation) MA
Professional Practice, Dance (specialisation) MA
Professional Practice, Dance Technique Pedagogy MA
Professional Practice, Somatic Studies MA
Theatre Arts MA

Psychology

Applied Psychology MSc
Clinical Health Psychology and Wellbeing MSc
Cognitive and Clinical Neuroscience MSc
Cognitive Neuroscience MSc by Research
Criminology with Forensic Psychology MSc
Developmental Psychology in Action MSc
Psychological Therapies and Interventions MSc / PGDip
Psychology Conversion MSc

Criminology and Politics

Comparative Drug and Alcohol Studies MA
Criminology MA
Criminology with Forensic Psychology MSc
Cybercrime and Digital Investigation MSc
Digital Forensics MSc
Global Governance and Sustainable Development MA
International Relations MA

Youth Justice, Community Safety and Applied Criminology MA

Sports and Exercise Science

Exercise and Physical Activity for Special Populations and Healthy Ageing MSc/PGDip/PGCert
Sport and Exercise Nutrition MSc
Sport Performance Analysis MSc
Sport Performance Analysis MSc (Distance Learning)
Sport Rehabilitation MSc
Strength and Conditioning MSc
Strength and Conditioning MSc (Online Distance Learning)

Research

Ambient Assisted Living MSc by Research
Art and Design Research Degree
Biology and Biomedical Sciences MPhil/PhD
Centre for Decision Analysis and Risk Management DProf
Data Science MSc by Research
Doctor of Business Administration DBA
Doctor of Professional Studies (DProf)
Doctor of Professional Studies (DProf) by Public Works
Engineering and Computing MSc by Research
Environmental Science MPhil/PhD
Evolutionary Behavioural Science MSc by Research
Law MPhil/PhD
Master of Philosophy MPhil and Doctor of Philosophy PhD
Masters/Doctor of Professional Studies MProf/DProf
Oncology MSc by Research
Professional Practice DProf (Business)
Public Works PhD
Security MSc by Research
Tourism Mphil/PhD
Visual Analytics MSc by Research
Visual and Arts-based Methods MSc by Research



INTERNATIONAL STUDENTS



147 countries represented on our campus



160 international partnerships



16 regional offices



41,000+ students around the World

London is the best place for your career – whatever your sector

Studying at our campus in Hendon, you'll have multinational companies and innovative start-ups on your doorstep. And of course, you'll be near famous landmarks, museums, and live music venues.

From day one, you'll get the support you need. Wherever you're from, we're confident you'll quickly feel at home on campus. Every day you'll have new opportunities, create new connections and make new friends



Meet Waqas



With a large number of international students and lecturers here, it opens your eyes to the world. This diversity really helped me with my master's.

Find your regional team

We know it's useful to have someone local to give you advice when you're deciding to study abroad. That's why we have a network of regional offices around the world, so you get the tailored support you need. We're one of the first universities that have done this.

Meet us in person or online

We'd love to get to know you. Join us at one of the global fairs we attend in person or virtually. Can't make it to an event? We run Virtual Open Evenings throughout the year. You'll benefit from one-to-one advice from staff, academics, and current students.

[FIND OUT MORE >](#)



Meet Kiran

Kiran came from India to Middlesex to study MSc Computer Networks and Network Design and improve his career prospects in the fast-moving technology sector.



Coming back to university was scary initially, but it was so rewarding. Before Middlesex I had never had a course that combined the theoretical with practical application. It was such a different experience for me – I could just listen to a lecture, go back to the labs and experience that straight away.

Invaluable practical knowledge

There are skills that you learn on a postgraduate course that take you one step higher. I gained a work placement for a VOIP calls company because of my experience at Middlesex. It was a great launchpad to my current role. My practical knowledge is what got me the job.

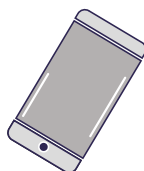
[Contact Your Nearest Regional Team](#)

GET IN TOUCH



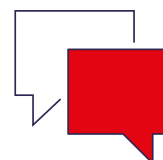
Book your place at a
postgrad open event

[Book now >](#)



Chat to our students or
staff via Unibuddy

[Chat to Students >](#)



Chat with us if you have any
questions about your application

[Chat to admissions >](#)



middlesexuniversity



MiddlesexUni



MiddlesexUniversity



MiddlesexUniVideo

WWW.MDX.AC.UK/POSTGRADUATE